

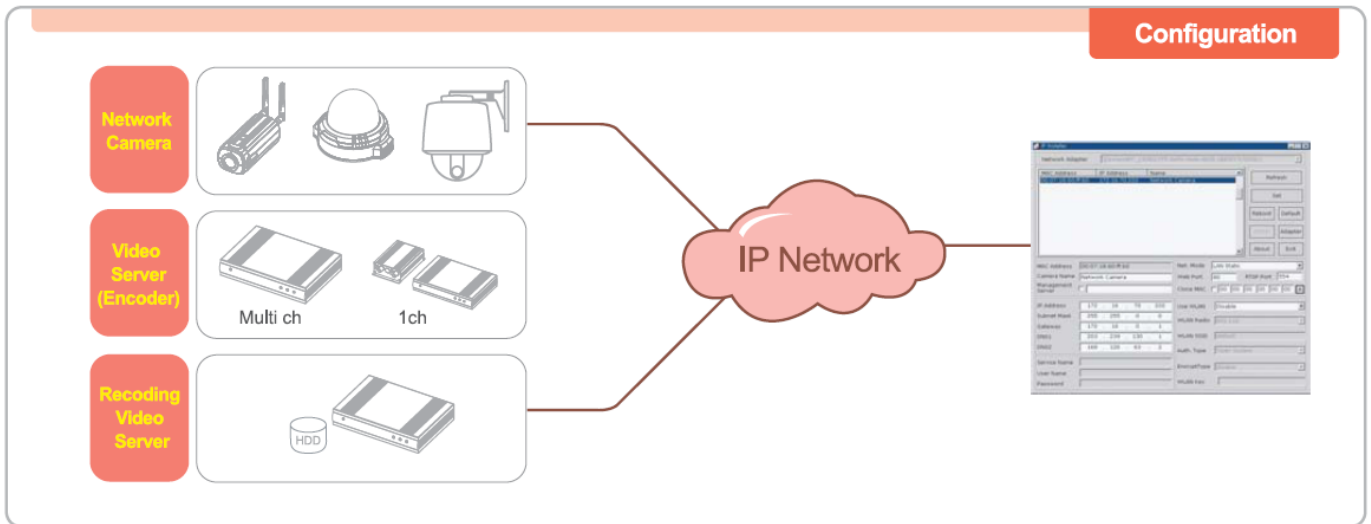
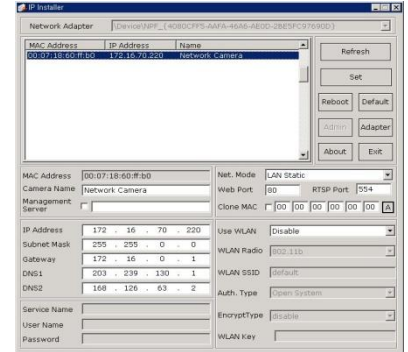
# IP Installer

## IP Discovery Program

IP-installer is an application program developed to assign IP address and setup network parameters to IP camera, video server, or recording video server.

### Key Features

- Sets up IP parameters & network environment
- Product identification by MAC address
- Listing of compliant products in the same subnet



# Web Viewer



## Single & 4 Channel ActiveX Viewer

ActiveX Viewer is a simple viewer application that can be used for simple web based video connection (through internet explorer).

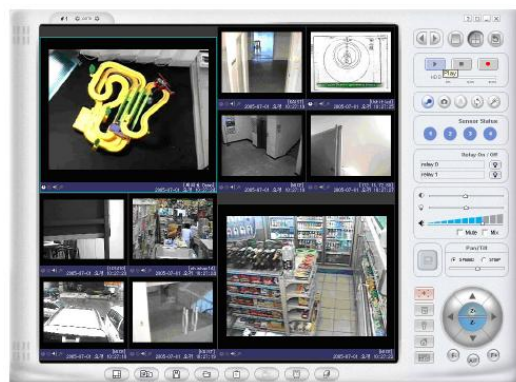
### Key Features

- Web browser Plug-in
- 1 or 4 Channel (standard)  
(more channel will be available)
- Play & Record
- Remote PTZ control

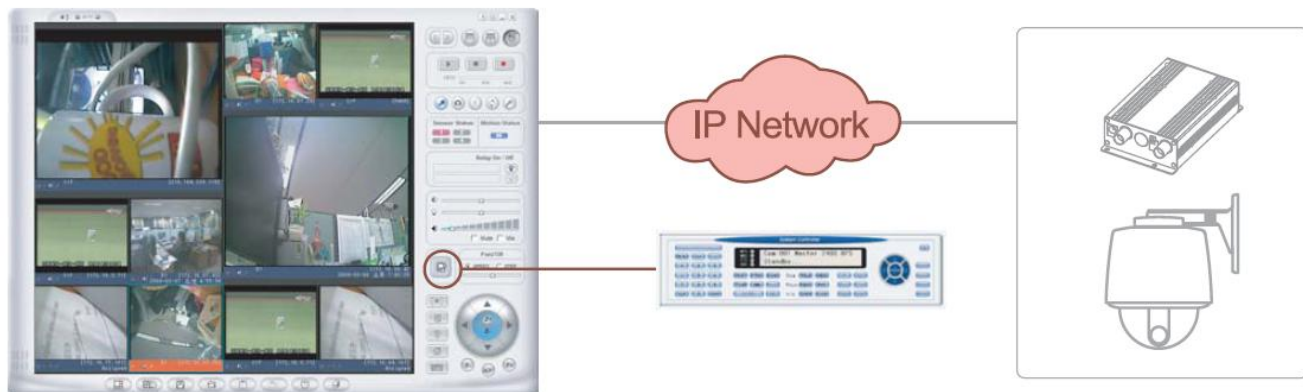


## Client Program for IP cameras and Video Servers

iNVR is an entry level CMS(centralized management Software) designed to manage 16 channels of video streams from IP cameras, video servers or recording video servers. iNVR is the ideal CMS for entry level surveillance system. Users can view and record live video from the connected products or they can playback recorded video on the PC. Control interfaces for the storage devices such as HDD are available through a dedicated control window offered with iNVR.



## System Configuration

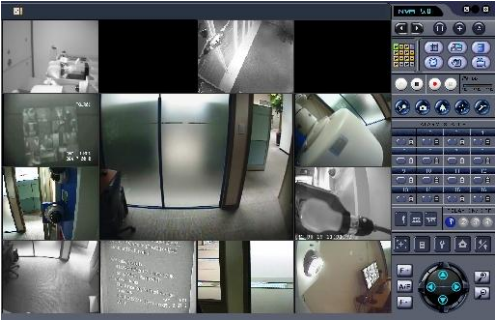


## Key Features

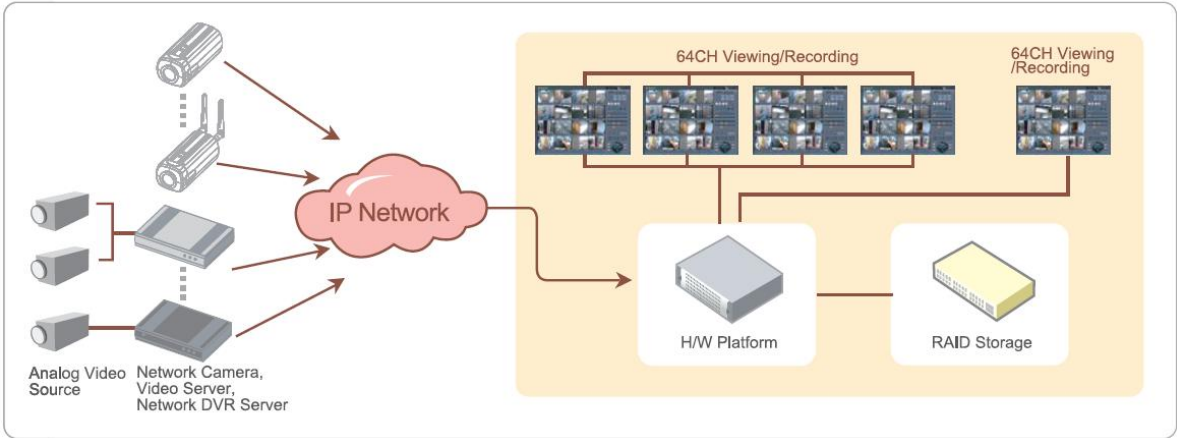
- Compliant to IP camera, A/V server
- Up to 16chnnel/ screen (5 screens in sequence, total 16 X 5 = 80ch / program)
- Innovative, smart & flexible resizing and lay out of display screen
- Recording mode: schedule, manual, alarm (sensor, motion)
- Configuration file for saving the configuration
- Remote P/T/Z control
- Bi-directional audio communication
- Video flip control
- Remote relay control & sensor status indicator
- Remote administration of IP cameras, video servers, and recording video server
- Minimum PC recommendation : Windows 98SE or later versions with Intel Pentium III and minimum 256MB of RAM

## CMS Software

NVR-PRO is a CMS (centralized management software) that manages up to 64 channels of video streams from IP cameras, video servers, recording video server, and network DVRs. Besides live video management from connected products, full control interface for the HDD or embedded storage devices are offered with NVR-PRO. Do not underestimate the value of the NVR-pro! It supports all the essential features needed on a professional CMS as well as advanced remote storage management solution of relevant products. Do not rely upon expensive CMS solution for building entry level IP surveillance system. NVR-Pro will do it!



## System Configuration



## Key Features

- Max 64CH viewing and recording ( 4 windows, 16ch/windows)
- E-map
- Digital PTZ for megapixel IP camera
- Remote control to local flash memory and HDD (RVS,DVR controller)
- Alarm status display (64CH)
- Tiling & resizing
- Remote P/T/Z control
- Bi-directional audio communication
- Save & load of configuration Information
- Easy record & search (manual, schedule, alarm, motion detection)
- Support up to 4 monitors
- Daemon, channel grouping, software protection etc.
- Program lock

## RVS/DVR Controller



Multi-windows display (up to 4)



E-Map



USB



USB 키보드 컨트롤러



# Specifications

Live Viewing / Recording / Local Playback		Hardware Platform (PC/Server)	
Live Viewing	<ul style="list-style-type: none"><li>•Up to 64ch(16 x 4 windows)</li><li>•Each window independently reconfigurable</li></ul>	System (test PC spec)	<ul style="list-style-type: none"><li>•Model : Dell Precision T3400 525W</li><li>•Processor: Intel(R) Core(TM)2 Duo E8400(3.00GHz/1333MHz FSB/ 6MB L2 Cache)</li><li>•OS: Factory install Genuine Windows(R) XP Professional SP2 Edition(Korean)</li><li>•Resource CD for Windows XP 32bit 1</li><li>•Memory : 2GB (2x1GB) NECC Dual Channel DDR2 667MHz SDRAM Memory</li><li>•Video Card : 256MB PCIe x16 ATI Fire GL v3600, dual DVI or VGA support</li><li>•HDD: Seagate S-ATA 750GB * 3</li></ul>
Recording	<ul style="list-style-type: none"><li>•ICF data format</li><li>•Up to 4 recording folders, overwrite control</li><li>•Recording by manual, schedule, alarm(sensor, motion)</li></ul>		
Local Playback	<ul style="list-style-type: none"><li>•Independent playback window</li><li>•Search by calendar and search filter</li></ul>		
Remote Playback	<ul style="list-style-type: none"><li>•Remote search &amp; playback from other PC (To be developed)</li></ul>		
Alarm Event	<ul style="list-style-type: none"><li>•Sensor &amp; Motion detection</li></ul>		
Audio / PTZ			
Audio	<ul style="list-style-type: none"><li>•Bi-directional audio communication between NVR-PRO and IP camera</li><li>•Audio Mixing</li></ul>	Memory	2G RAM
PTZ	<ul style="list-style-type: none"><li>•Remote PTZ control (manual)</li><li>•Centering</li><li>•Preset / Focus / Speed control</li></ul>	HDD	OS set up space / data recording HDD
Digital PTZ	<ul style="list-style-type: none"><li>• Remote control</li><li>• Video Crop</li></ul>	Graphic Card	ATI Card / AGP (AGP, PCI-E) / memory 128M
Relay Control		NIC	100 baseT or above, Gigabit LAN recommended
Remote Relay Control	Remote relay on / off control	OS	Windows XP
Remote control of recording video server	<ul style="list-style-type: none"><li>•Remote recording control</li><li>•Remote playback</li><li>•Download from recording video server</li><li>•Web hard disk</li></ul>		
Audio input/output	1ch( from Microphone or audio device) /1ch(to speaker)		

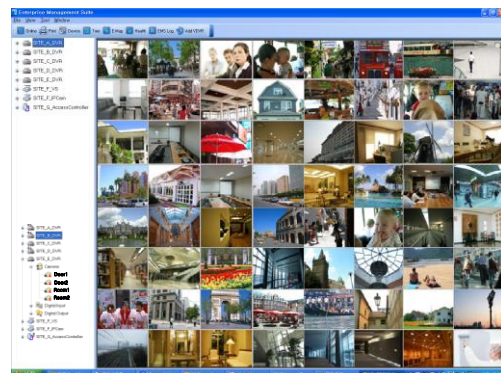
## Recommended Configuration

Channel	16CH		32CH		48CH	64CH
Resolution	CIF	D1	CIF	D1	CIF	CIF
Max Frame Rate	240Frame/sec	240Frame/sec	480Frame/sec	480Frame/sec	720Frame/sec	960Frame/sec
Max Video Rate	8Mbps	16Mbps	16Mbps	32Mbps	24Mbps	32Mbps

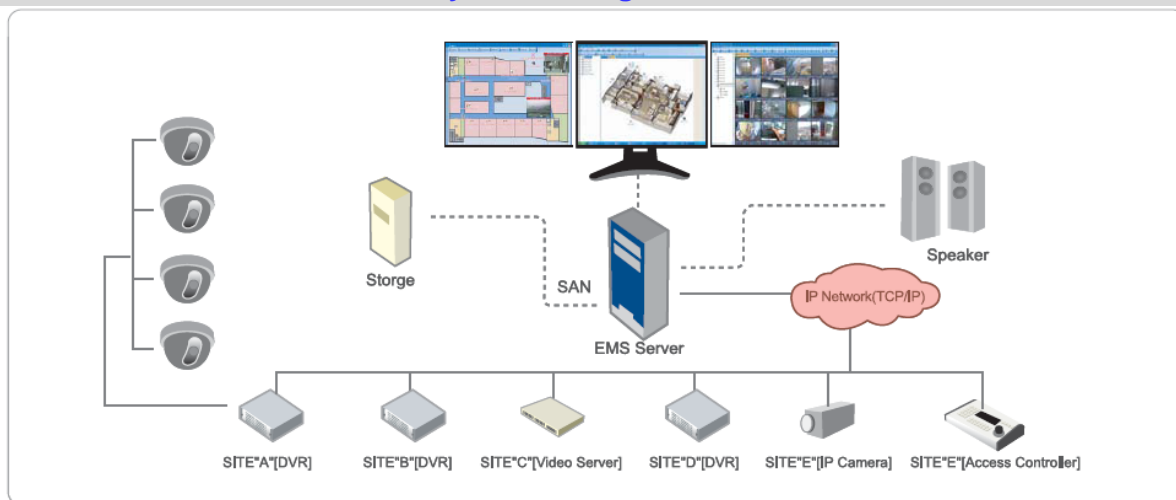


## Professional CMS Software

iCMS is an optimal CMS solution for mid & large scale enterprise level. It supports multi-window mode making it possible to manage more than 500 channels (64x8) simultaneously. iCanTek's iCMS is the ideal CMS for enterprise level surveillance system. Users can view, record, and playback live images from either IP cameras or video servers simultaneously. With its great flexibility and scalability, user can open up to 8 windows different purposes such as live monitoring, e-map, health report, etc.



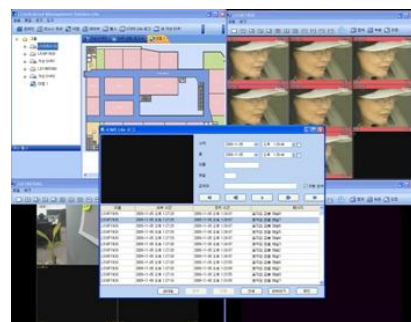
## System Configuration



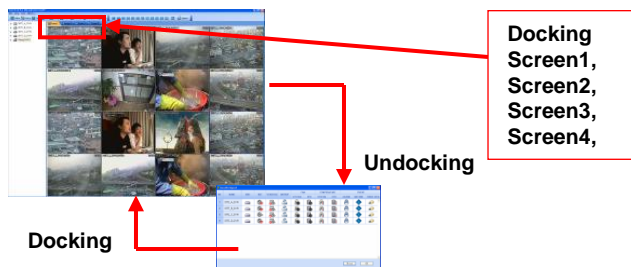
## Key Features

- Manages up to 300 devices of 300 different IP
- Max 512CH viewing (monitoring) and recording, remote P/T/Z control
- Hyper link, hyper action (E-map, control of DO/preset)
- Easy record & search
  - Manual, schedule, alarm, motion detection
- Multi windows & docking windows (up to 64x8 windows)
- Health report (can handle events from 300 sites)
- Schedule network backup (NAS, SAN back up supported)

## Multi Window



## Docking Window



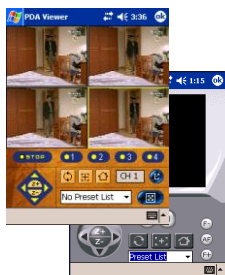


# PDA / Mobile Phone Viewer



## Mobile Viewing Solution

Want video connection to your surveillance product while you are on the road? iCanTek offers two ways of mobile connection to your surveillance product.



### PDA Viewer

PDA viewer is a program for a PDA running on Pocket PC or Windows Mobile. Depending on the speed of the network up to 8 frames of live video can be delivered for each second.

### Key Features

- Pocket PC or Windows Mobile
- Over WiFi or mobile internet
- Max 8 fps on WiFi network
- Display of 4 channels selected from 16ch DVR
- Direct connection to IP camera, video server or DVR
- PTZ and centering
- Compatible to all iCanView, iCanServer, myDVR-I Series

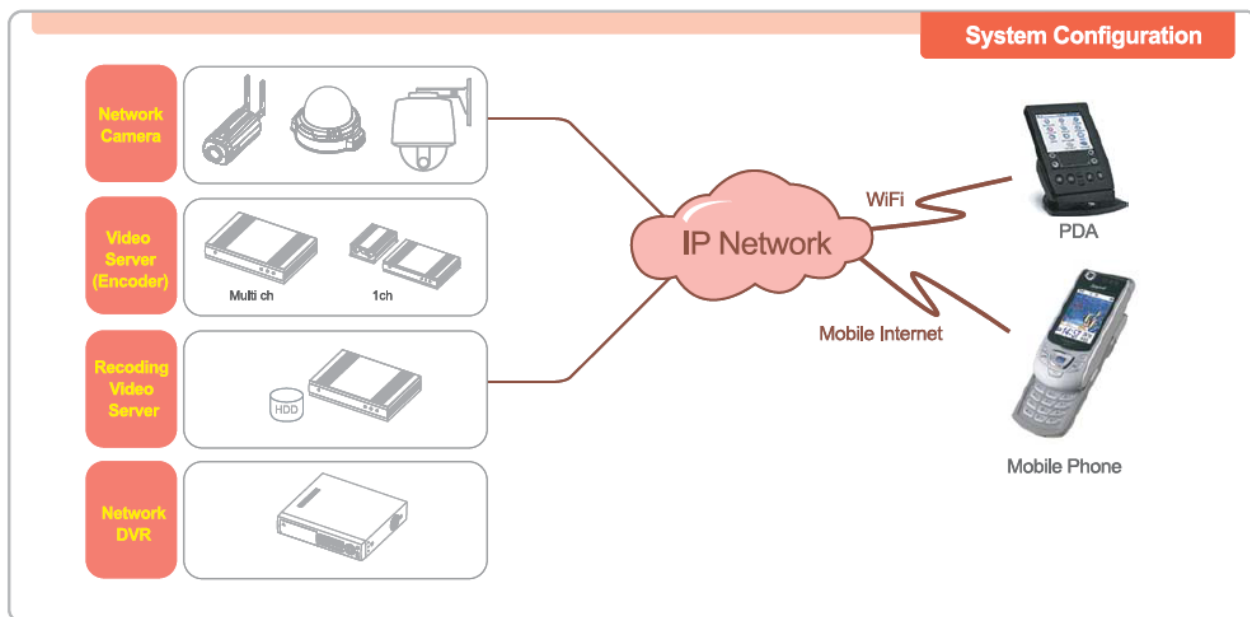


### 3G Mobile Phone Viewer

iCanTek offers most advanced mobile monitoring solution using 3G mobile phones. The connection is achieved through a 3G mobile server which converts the video stream from the IP camera into a 3G video phone data stream. Simple video call to the IP camera will lead you to full motion mobile monitoring with bidirectional audio communication.

### Key Features

- Compliant to 3G mobile phone
- Connection through 3G video call
- Service through 3G mobile server
- Full motion video & bidirectional audio
- Max. 15FPS
- PTZ control



# CMS Integration

## Variety of CMS To Choose from

In recognition of the quality and performance, many CMS software solutions are now supporting iCanTek's IP camera and video server products. For applications which are not covered by the standard CMS solution offered by iCanTek, customers are encouraged to contact with the following CMS solution providers. iCanTek will continue to work with partners to expand the list of compliant CMS solutions..





# NVR Integration

## Variety of NVR To Choose from

In recognition of the quality and performance, many NVRs are now supporting iCanTek's IP camera and video server products. Customers are encouraged to contact with the following NVR solution providers. iCanTek will continue to work with partners to expand the list of compliant NVR solutions..



# DDNS Server



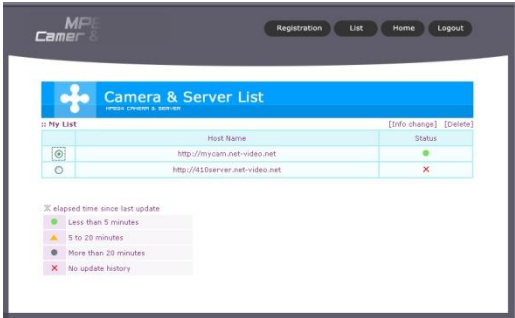
## Dynamic IP Domain Name Server

DDNS Server is a server that enables access to the IP camera through domain name. The DDNS will be particularly useful when the IP cameras are installed under dynamic IP environment. In order to be supported by the DDNS, the product should be registered with the DDNS server.

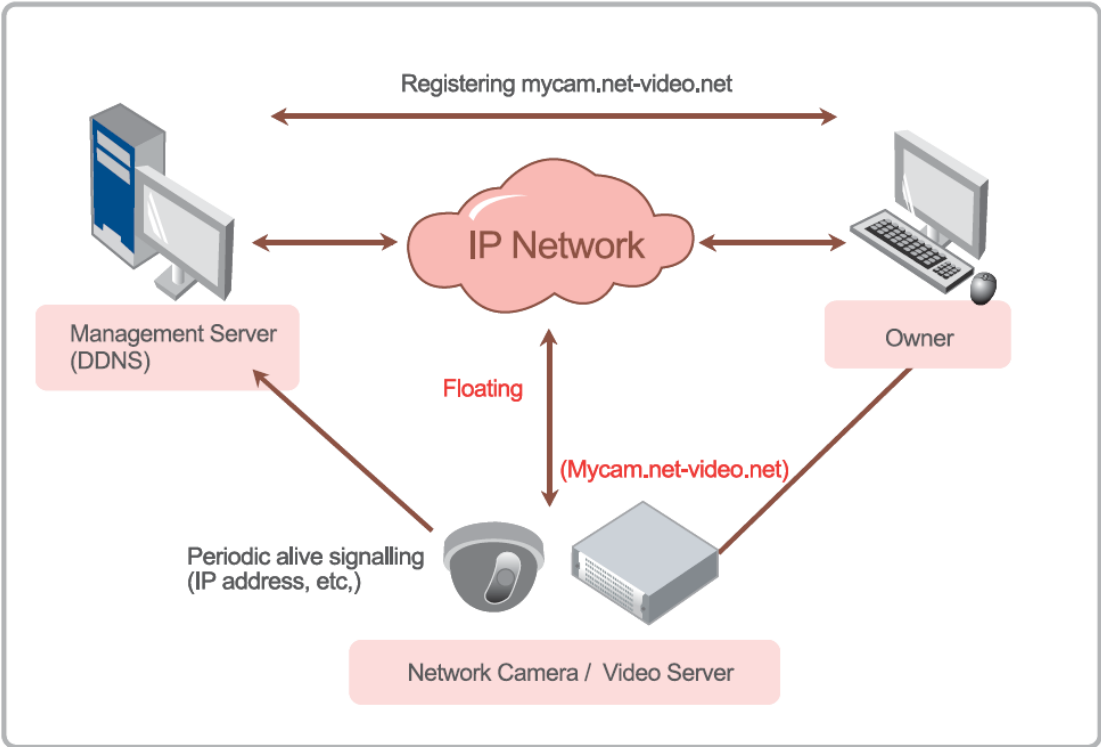


## Key Features

- Name service for IP cameras, video server, recording video server, and DVR.
- Registered product can be connected using name.
- Integrated management interface through web.
- Status display of registered product.



## System Configuration



## Streaming Relay Server

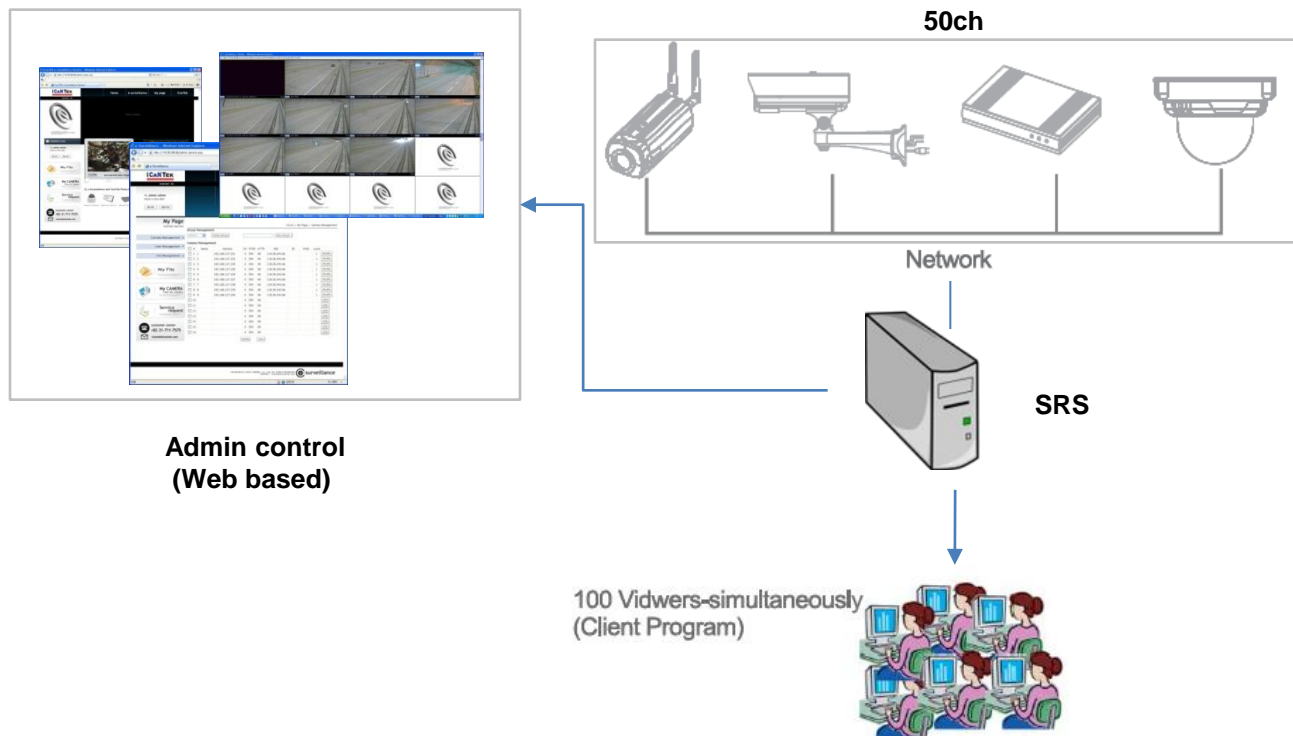
SRS (Streaming Relay Server) is a scalable and flexible framework for extending the application area of IP camera beyond video surveillance. It converts A/V streams received from IP camera or video server into Windows media compliant streaming format. The converted video stream is re-transmitted to clients. SRS enables unlimited number of converted live video stream be delivered over the broadband network simultaneously. Video from single IP camera can be viewed by millions of users through SRS. Reliability comes from robust operation of SRS core based on Microsoft Window 2003 server architecture.



## Key Features

- Live video connection to IP camera and video server
- Maximum number of input channels(IP cameras and/or video server )to the SRS at the same time : **50ch**
- Maximum number of output channels(clients, users ) from the SRS at the same time : **100ch**
- Admin control through web connection
- Supported IP products : iCanTek's IP camera and video server that is based on **MPEG4** compression  
- for more detailed models, please ask iCanTek

## System Configuration



# Specifications

## Streaming Relay Server (SRS)

– Supplied by iCanTek

- Live streaming to unlimited number of viewers dependent on network bandwidth
  - \* Initial latency : around 20 seconds
  - \* Support only video
- Transmits IP camera video with lowest bandwidth
- Maximum number of input channels(IP cameras and/or video server )to the SRS at the same time : **50ch**
- Maximum number of output channels(clients, users ) from the SRS at the same time : **100ch**
- Various transmission and video quality option is possible for optimal throughput
- Camera registration / camera configuration
- Camera control / event logging

## Client Viewer

- Web viewer : 16ch

## System Requirements

- Prepared by customer

### Hardware

- CPU: Higher than Intel dual core 2.4Ghz
- RAM: 4GB DDR-2
- HDD: 500GB HDD
- Network: 100Mbps / Gbps Ethernet

### Software

- Microsoft Windows 2003 Server, IIS 6.0
- MS-SQL 2005, Windows Media Service 9

## System Requirement

### Hardware

- CPU: Higher than Intel dual core 2.4Ghz
- RAM: 4GByte DDR-2
- HDD: 500GByte HDD,
- Network: 100Mbps / Gbps Ethernet

### Software

- Microsoft Windows 2000/XP/Vista, Windows Media Player 9
- Anti virus S/W

# 3G Mobile Server



## 3G Mobile Server Solution

3G Mobile Server enables mobile phone users to access IP cameras on IP network by filling the gap in the standard and protocol between 3G Mobile network and conventional IP network. Users can access to IP camera on IP network through video call

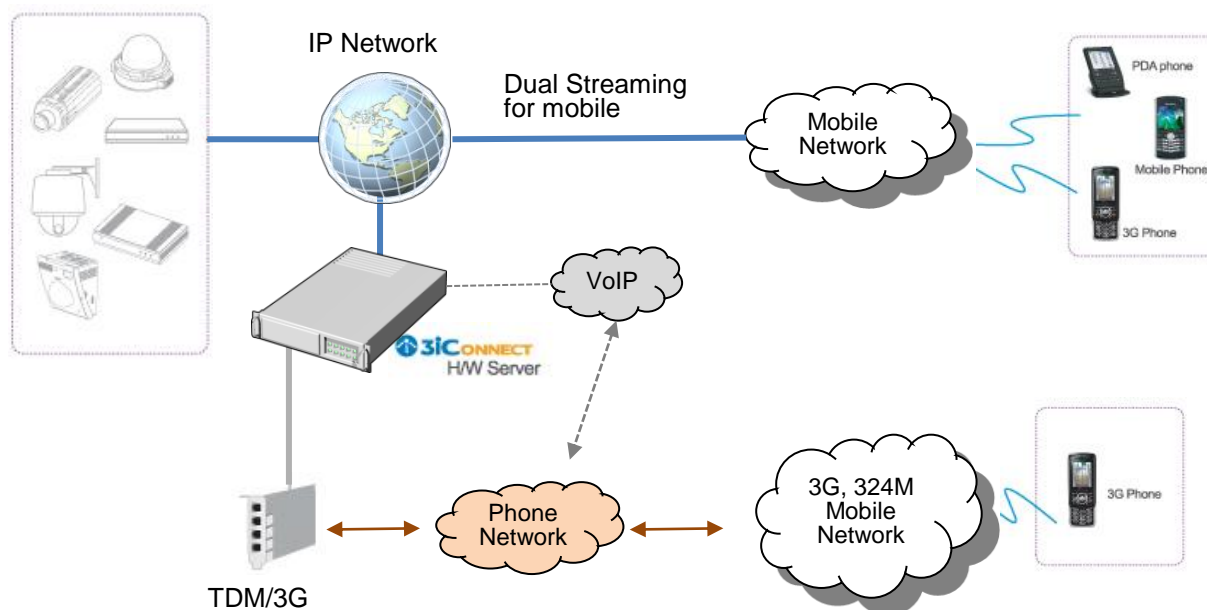


## Key Features

- Connection through 3G video call
- User authentication
- Real-time video in QCIF
- Bi-directional audio communication
- Event call
  - Call to registered phone on event on the camera
- Pan/Tilt/Zoom control
- Remote relay/sensor control
- Multiple camera registration
  - Multiple cameras can be registered and accessed through one number



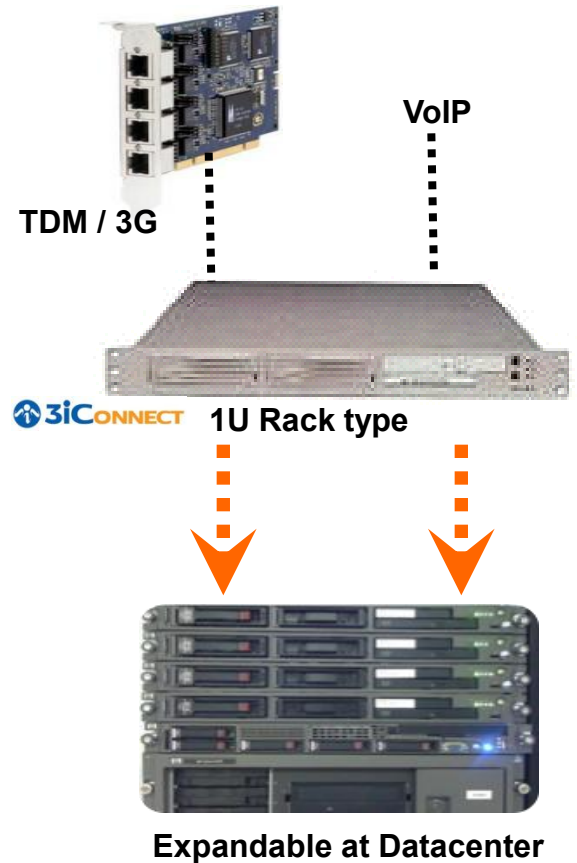
## System Configuration



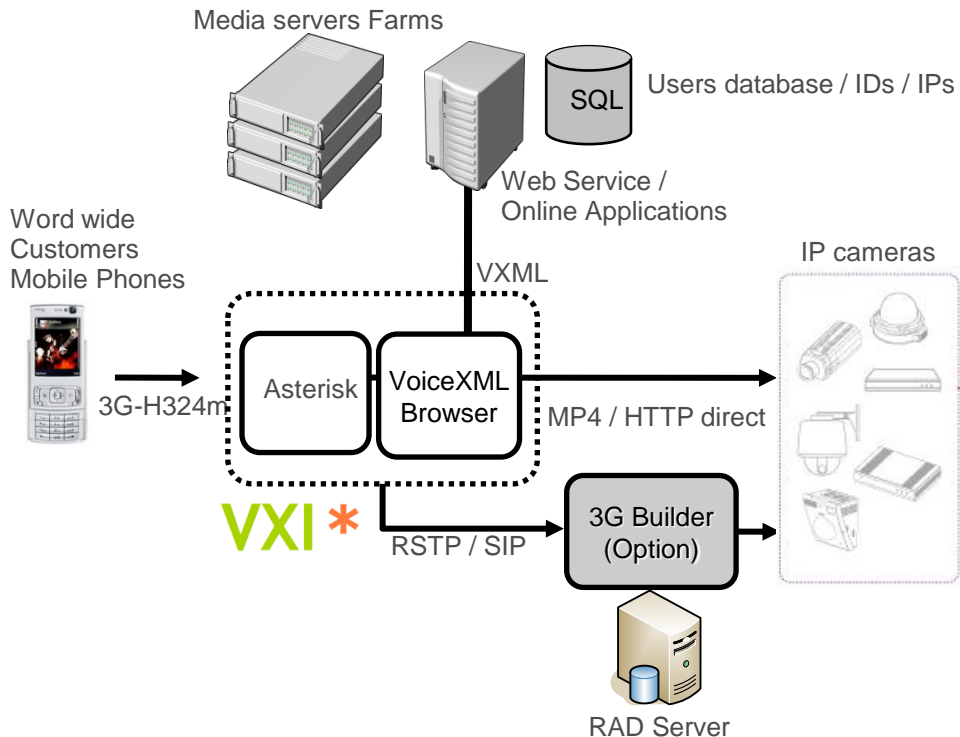


# Specifications

Functionality
Real-time QCIF video streaming
Bi-directional Audio
Event calling: active to call with any event from camera side
PTZ control: pan / tilt / zoom control
External device control: sensor / relay control to camera side (RS-485/232)
Multiple camera register: multiple cameras can be registered for one phone number.
Hardware
Dual core Xeon CPU
X2 TDM PCI slot
Customized Linux
3iConnect Middleware
Min 2G memory & 96G Storage for basic operation
Video per Server
1 – 60(48) ports TDM / 3G or SIP <60(E1) / 48(T1) ports>



## Expandability



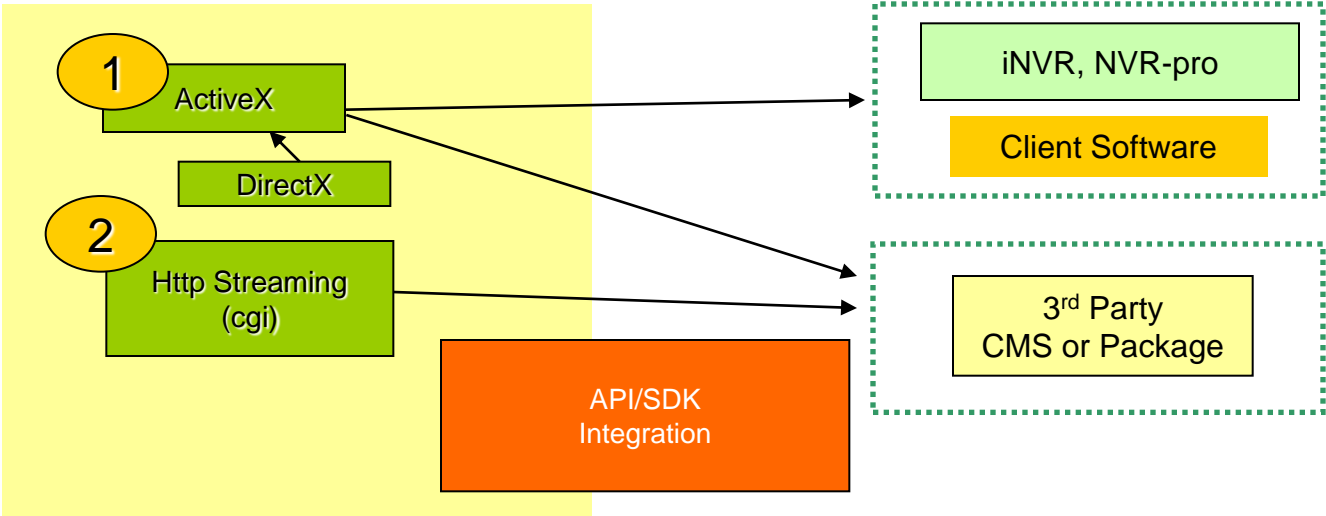
# API / SDK

## Comprehensive & Compatible API / SDK

iCanTek offers comprehensive API/SDK package set that include features needed for integration with any CMS software in the market. iCanTek's API/SDK is a tool kit offered to application system developers for integration of iCanTek's IP cameras, video servers, or recording video server into their solution. iCanTek's API/SDK is field proven and powerful features are offered in various forms. We offer active-X SDK which is a high level API set for developing Windows based application. We also offer HTTP tool kit, which is widely used by CMS developers.

### Target CMS / Application Software

- Entry-level CMS Software
- Mid & Enterprise class(64ch or higher) CMS software
- Various vertical market applications
- Integration with other security systems (access control, biometrics)
- Value-added software for special niche market
  - Viewing solution for smart phones, PDA, etc.,



### Applicable Products Table

Type	Applicable Products	Remark
ActiveX based API	•Products: All of IP products & DVR's •Software: iNVR, NVR-PRO	•Windows OS
HTTP Streaming (CGI) based API	•Products: All of IP products except for iCanServer 540R/540RH & Standalone DVR •Software: Large scale 3rd party software	

# PoE, PLC Power Adapters

## Installation-Friendly Accessories

iCanTek offers various PoE accessories for convenience and cost savings in the installation.



### Standard PoE Convertor

#### Key Features

- Standard PoE IEEE802.3af
- Power and data on one cable
- Provides 12V (10.3W) DC outp addition to LAN connection



### Proprietary PoE Adaptor

#### Key Features

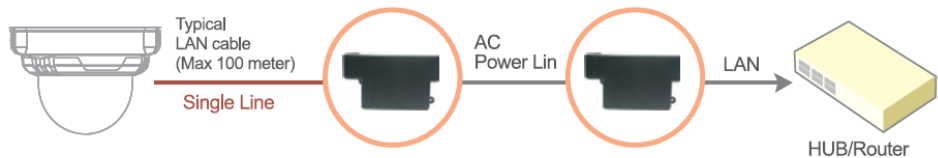
- iCanTek's proprietary PoE with power adapter
- No need for standard PoE hub
- cost effective solution



### Proprietary PLC Adaptor

#### Key Features

- iCanTek's proprietary PLC with power adapter
- Replaces Ethernet cable with power line
- Integrated 23V adaptor 23V DC available through RJ45 LAN connector
- 14Mbps



# iWB54/iWC54

## 2.4GHz/5GHz Dual Band Outdoor Wireless Solution

iCanTek's iWB54/iWC54 provides cost effective high-power dual band radio.

iWB54/iWC54 is premium grade rugged commercial equipment with IP68 compliant enclosure.

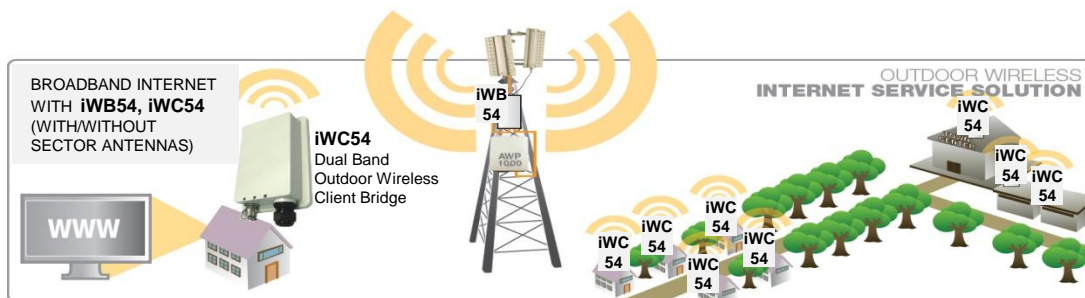
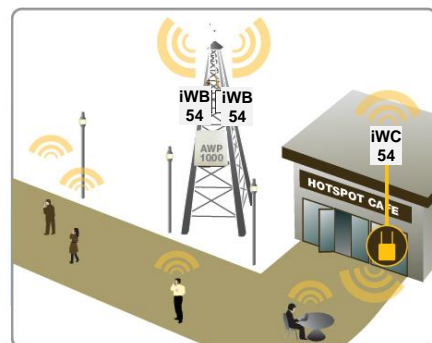
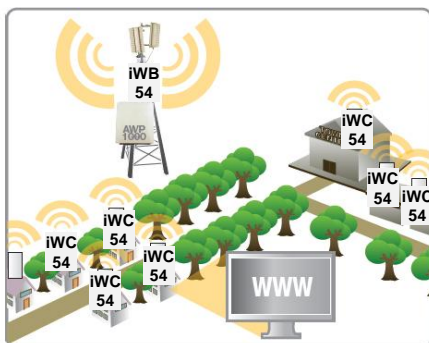
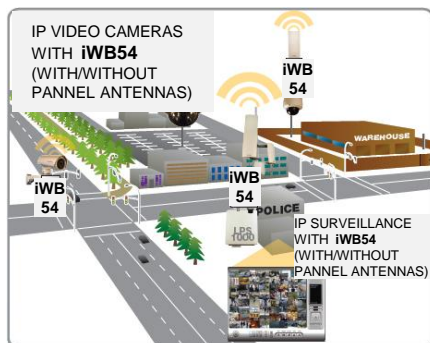


### Key Features

- Carrier class quality  
Carrier class broadband wireless access solution provides scalability, reliability, and superior performance in the most challenging environments.
- License free long range dual band operation  
Software selectable 2.4 GHz or 5 GHz operation offers over 20 non-overlapping channels for the most flexible interference free application scenario without the need for regulatory frequency licensing.
- Internal and external antenna selection  
Embedded 12 dBi 2.4 GHz antenna offers nominal wireless range. If extended range up to 50km is desired, the use of external 2.4 GHz or 5GHz antenna is optional.
- Rugged outdoor weatherproof design  
The IP68 compliant weatherproof enclosure, connectors, and extreme weather rating electronic components continue to perform in the most extreme weather conditions.
- Standards base wireless subscriber equipment  
Long range IEEE compliant 802.11a/b/g Client provides license free subscriber based network solutions for wireless network service providers.
- Power over Ethernet  
The built-in PoE feature eliminates power connection at the camera location. This eliminates the need of running an additional power line cable.
- Integrated RF site survey tool  
RF wireless site survey tool built into every radio for simplified frequency planning and installation.
- Secure wireless transmission  
Equipped with Government Strength Advance Encryption System (AES), transmission of top level information is highly secure with the air Ether Outdoor wireless system



### System Configuration



# Specifications

Hardware	
Enclosure Protection	IP68 Compliant
Environmental	-40°C to +85°C
Humidity	95% @ 55°C
Frequency	2412 ~ 2484 MHz & 5.1 ~ 5.8 GHz
LAN port	1
Number of Radio	1
Operating Channels	IEEE802.11 b/g: 1~11ch(America), 1 ~ 13ch(General Europe), 1 ~ 14ch(Japan)
	IEEE802.11a: 4ch (Japan), 19ch(Europe), 13ch(USA)
Modulation	OFDM (64-QAM,) QPSK, BPSK / DSSS(DBPSK, DQPSK, CCK))
Transmit Power 802.11a	19dBm @ 6-24Mbps, 18dBm @ 36Mbps, 17dBm @ 48Mbps, 16dBm @ 54Mbps
Transmit Power 802.11g	25dBm @ 6-24Mbps, 23dBm @ 36Mbps, 22dBm @ 48Mbps, 21dBm @ 54Mbps
Transmit Power 802.11b	25dBm
Receiver Sensitivity 802.11a/g	-92dBm @ 6-24Mbps, -80dBm @ 36Mbps, -76dBm @ 48Mbps, -72dBm @ 54Mbps
Receiver Sensitivity 802.11b	-96dBm @ 1Mbps, -95dBm @ 2Mbps, -93dBm @ 5.5Mbps, -92dBm @ 11Mbps
Package Content	
Package Contents	iWB54/iWC54, AC/DC Power Adapter, WC002 Weatherproof Connector Set, PIP100 1-Port DC PoE Injector, User Manual CDROM, Pole Mount Bracket System, Installation Guide

Network		
Protocols		TCP/IP, RTSP, UDP, IGMP, DHCP, Tags, PPPoE
Maximum Ethernet Clients Supported		64
Compliance		FCC, CE, ROHS, ETSI
Antenna Options		
	iPA21	2.4 GHz 21dBi
	iPA5G18	5GHz 18dBi
Sector iSA1821		2.4 GHz 18~21dBi
Parabolic-Grid iGA5G24		5GHz 24dBi
Omni-Directional iOA09		2.4GHz 9dBi

Software	
Wireless	<ul style="list-style-type: none"> <li>•802.11R</li> <li>•IEEE 802.11a</li> <li>•IEEE 802.11 b/g</li> <li>•Wireless Channel Support</li> <li>•Country Selection: FCC, ETSI, Japan</li> <li>•SSID assignment</li> <li>•Client BSSID assignment</li> <li>•WMM Support</li> <li>•Bandwidth Control: UP/DOWN kbps</li> <li>•802.11g Only Support</li> <li>•TPC (Transmit Power Control) Support:5 Steps</li> <li>•RSSI (dBm)</li> <li>•RF Site Survey</li> <li>•Burst Mode</li> <li>•Maximum Range (Use of External Antenna): 50km</li> </ul>

Software		
Operation Mode	iWB54	AP: 64 Stations, PTMP Bridge - No AP, (AP + PTMP Bridge) WDS, Client
	iWC54	Client
Security	iWB54	<ul style="list-style-type: none"> <li>•Http User Name &amp; Password, Access Control List, i.e (None/Accept/Deny)</li> <li>•802.1x Support, i.e (EAP-MD5, EAP-TLS, EAP-TTLS, PEAP)</li> <li>•Wireless Encryption: Open, Shared, WPA-PSK, WPA2-PSK, WPA &amp; WPA2, 64bit/128bit/256bit WEP, TKIP, AES-CCMP Support</li> <li>•Wireless Station Isolation, Hide SSID</li> </ul>
	iWC54	<ul style="list-style-type: none"> <li>•Http User Name &amp; Password</li> <li>•Wireless Encryption: Open, Shared, WPA-PSK, WPA2-PSK, WPA &amp; WPA2, 64bit/128bit/256bit WEP, TKIP, AES-CCMP Support</li> </ul>
Management	iWB54	<ul style="list-style-type: none"> <li>•Wireless Client/Station List , HTTP Web Based Configuration (IE), IP Alias</li> <li>•Configuration File Backup / Restore , SNMP v1, v2c, 802.11 Mib, Host Name</li> </ul>
	iWC54	<ul style="list-style-type: none"> <li>•HTTP Web Based Configuration (IE), IP Alias, Configuration File Backup / Restore</li> <li>•SNMP v1, v2c, 802.11 Mib, Host Name</li> </ul>
Configuration Retention after FW Upgrade	Yes	
DHCP Client	Yes	
VPN Pass Through	Yes	



# iESS100/iPE100&iPS200

## Ethernet Injector & Surge Suppressor

iCanTek provides PoE surge suppressor and Injector products that are purposely built to protect Ethernet enabled electronics and equipment from lightning and harmful transient voltage. The products are designed with low impedance and insertion loss to minimize data packet loss and information integrity while traveling across the lines. Polymer data line protection allow data transmission up to 100 Mbps.



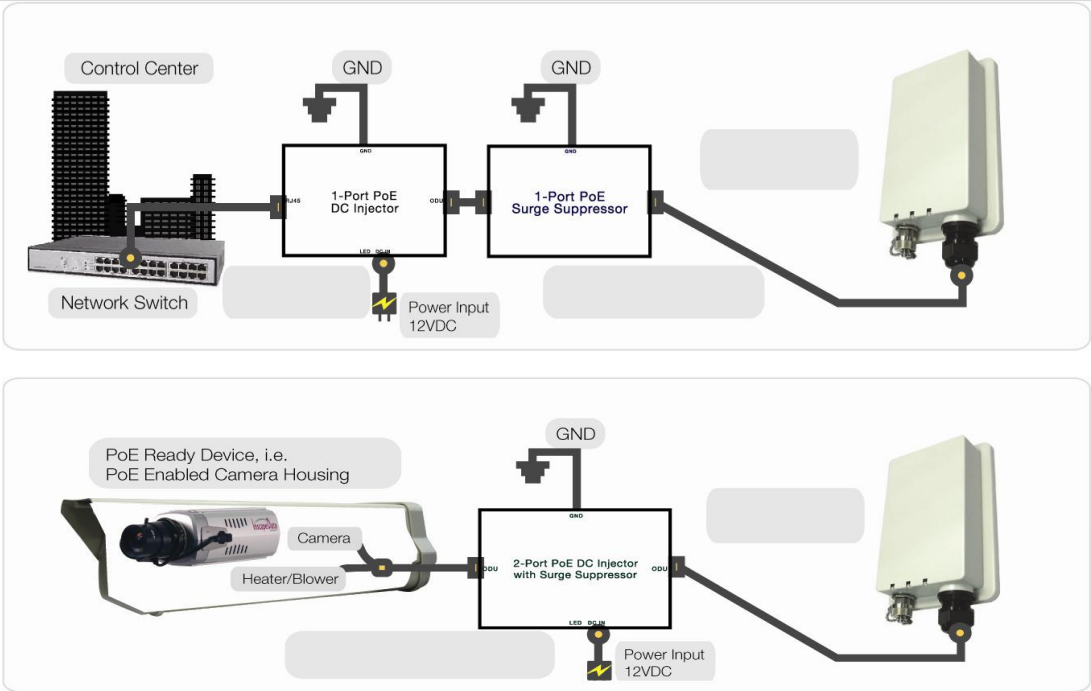
### Key Features

- All 8 PoE pins protected
- Data clamp voltage 7.5VDC
- Power clamp voltage 60 VDC
- Fast response time < 5 nS
- Max shunt capacitance < 25 pF
- > 132A peak pulse current
- Support data rates up to 100Mbps

### Key Benefits

- Protect equipments and investment
- Increase the life time of equipments
- Lower the probability of service call or operation failure

## System Configuration

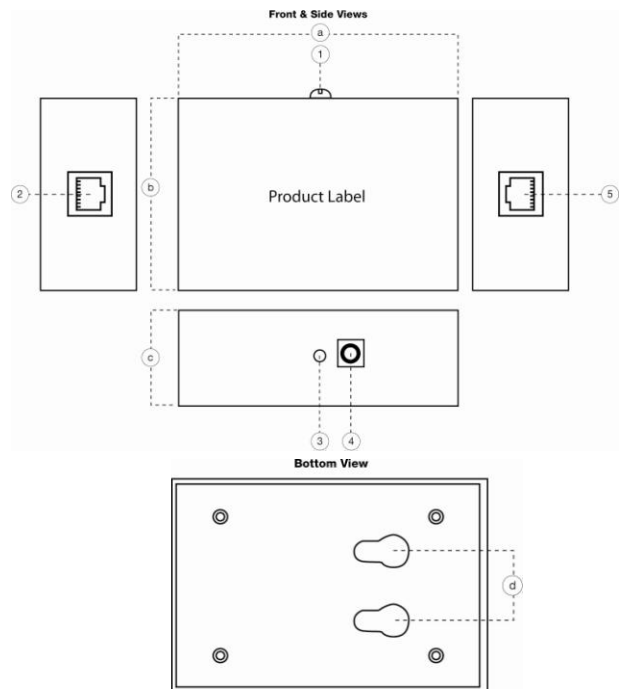


## Specifications

Model Name	iESS100 1-Port Ethernet Surge Suppressor	iPE100 1-Port PoE DC Injector	iPS200 2-Port PoE DC Injector with Surge Suppressor
No. of Power Injector Ports	0	1	2
Total No. of Ports	2	2	2
Surge Protection	Yes	No	Yes
Data Line Tx/RX Crossover	No	No	Yes
Operating Voltage	0~60VDC	0~48VDC	0~48VDC
Data Clamp Voltage	7.5VDC	-	7.5VDC
Power Clamp Voltage	60VDC	-	60VDC
Data Transfer Rate	100Mbps		
Protection Mode	Line-Line and Line-GND	-	Line-Line and Line-GND
Response Time	<5ns	-	<5ns
Max Shunt Capacitance	<25pF	-	<25pF
PoE Pins Protected	All 8	-	All 8
Peak Pulse Current (10/1000uS)	Pins: 1,2,3,6 = 132A Pins: 4,5,7,8 = 100A	-	Pins: 1,2,3,6 = 132A Pins: 4,5,7,8 = 100A
RJ45 Port	Metal Shield		
Temperature	-40°C to +85°C		
Humidity	0 ~90% RH		
Ground Wire	16 AWG, 10" Long		
Ground Screw	Yes		
Power Fuse	-	1.5A	1.5A
Warranty	2 Years		

## System Interfaces & Dimensions

Model Name	iESS100	iPE100	iPS200
Equipment Dimensions			
a X b x c	70 x 48 x 24mm		
Equipment Interfaces			
1	Ground	Ground	Ground
2	-	RJ45	ODU
3	-	LED	LED
4	-	DC IN	DC IN
5	-	ODU	ODU
Mounting Dimension			
d	15mm		



# iAWP1000

## 5 Port Adjustable Voltage PoE Switch

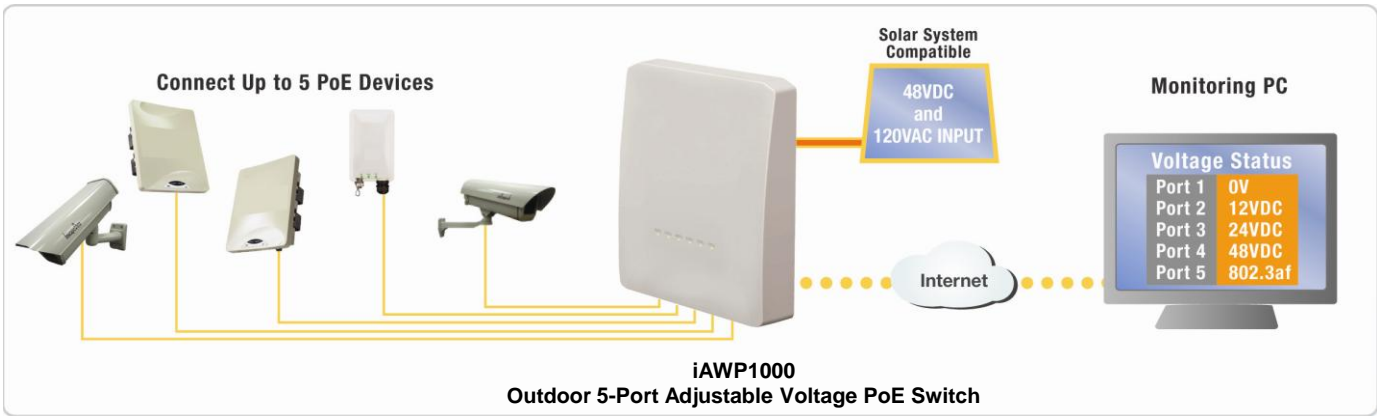
iCanTek's iAWP1000 is a unique and powerful outdoor 5-port Ethernet switch with an adjustable voltage feature. Locally, each iAWP1000 port is designed with a simple, easy-to-use push button for power level configuration. Remote configuration over the internet can be achieved using a common internet web browser.



### Key Features

- Remote status  
Remotely monitor port voltage status via web browser
- All weather enclosure  
IP66 enclosure rating and water tight connectors based on patent pending technology
- Independent port voltage adjustment  
adjustable DC voltage with PoE voltage Of 12VDC, 24VDC, 48VDC, and IEEE802.3af compatible
- Voltage and power LED display  
Bright LED indicators show operation power levels at each network port
- Flexible mounting options  
Easy to install brackets offer wall or mast mount flexibility
- Power device protection  
Port voltage change allowed only when no Ethernet device connected to port
- Integrated industrial Ethernet surge protection  
132A peak pulse current protection on every Ethernet port
- 5-Port PoE switch  
Connect up to 5 PoE devices or uplink switch at 10/100Mbps speeds with auto-MDX cross over feature

### System Configuration



# Specifications

Power Over Ethernet	
Port Voltage	Configurable to 0VDC, 12VDC, 24VDC, 48VDC and 802.3af
Protection	Over Current and Circuit Sorting
Power Delivery	100Watts Across 5 Ports with 20 Watts Average per Port
Network	
Protocols	IEEE802.3 10Base-T, IEEE802.3u 100Base-TX, IEEE802.3af, IEEE802.1Q VLAN encapsulation, IEEE802.1p QOS
Data Rate	Ethernet: 10/20Mbps (half/full duplex), Fast Ethernet: 100/200Mbps (half/full duplex)
Security	Software User Authentication
Interface	
Network	5 x 10/100Mbps Auto-MDIX POE Ports
Serial	1 x Proprietary USB Port
Power Connector Type	Terminal Block for AC Power
Hardware Reset	Reset and Factory Default Button
Management	
Configuration	Push Button Switch and RS232
Environmental	
Construction	Die Cast Aluminum and Poly Carbonate Casing
Dimension (WxHxD)	271.76mm x 315.17mm x 82.07mm
Weight	3.8kg
Storage Temperature	-10°C ~ +70°C (14°F ~ 158°F)
Operating Temperature	-40°C ~ +75°C (32°F ~ 167°F)
Operating Humidity	10% ~ 90% (non-condensing)
Outdoor Usage	Weatherproof to IP66
Ethernet Surge Protection	
Ports Protected	All 5 Ports Protected
Data Clamp Voltage	7.5VDC
Power Clamp Voltage	60VDC
Protection Mode	Line-Line and Line-GND
Response Time	< 5ns
Max Shunt Capacitance	< 25pF
Peak Pulse Current	132A
Power	
Power Input	100~240VAC 50/60Hz, Internal Universal Switching Power Supply
Power Consumption	100W Maximum
Power Output	100W Maximum Across 5 Ports
Compliance	
	FCC, CE, ROHS

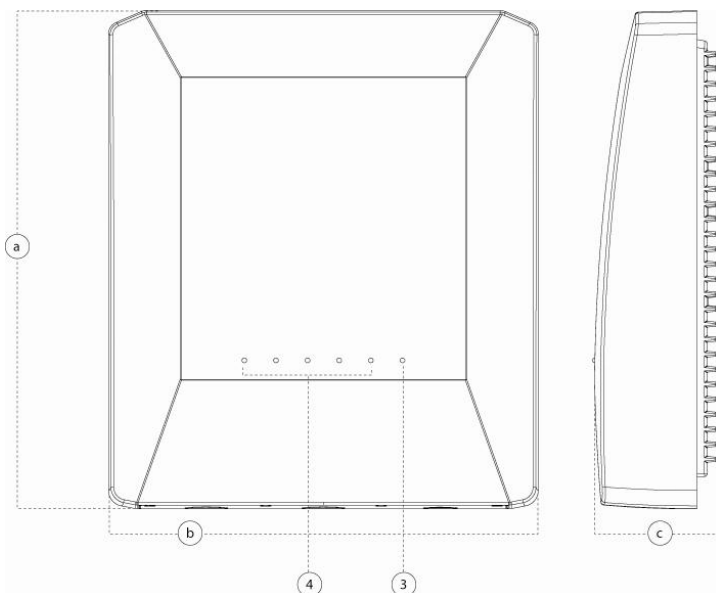
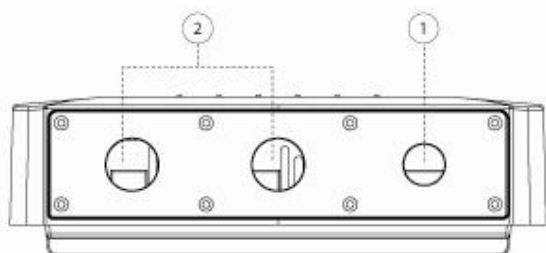
## Dimension & Interface

### Dimensions

- a. 315.17mm
- b. 271.76mm
- c. 82.07mm

### Interfaces

- 1.Weatherproof Power Connector
- 2.Weatherproof PoE Connector
- 3.Power LED
- 4.Network Link and Activity LED



# WTX-1200A

## Web Based Keyboard Controller

iCanTek offers a new keyboard controller by which user can manipulate PTZ cameras(speed domes) over IP network. User can utilize this keyboard controller with iCanTek's CMS, NVR-PRO. Simply connect the device to the PC where NVR-PRO is running through USB interface and enable it on NVR-PRO.

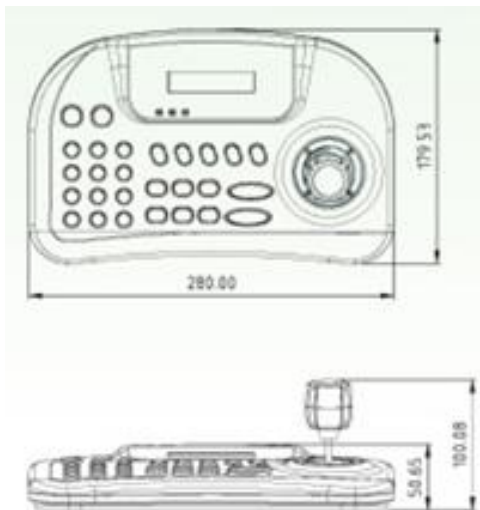


## Key Features

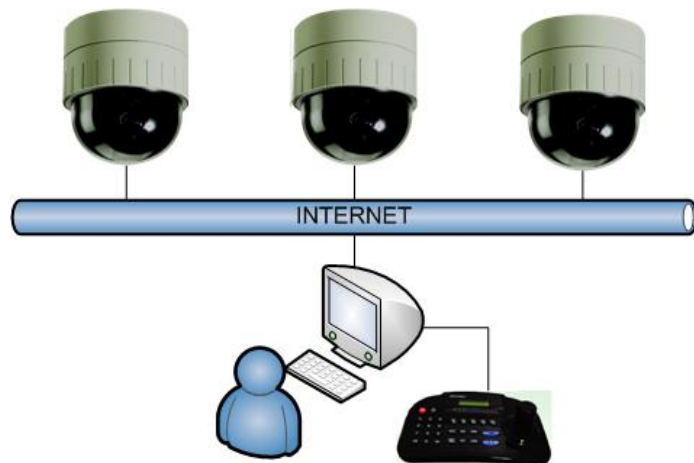
- Discrete design and ergonomic structure
- Professional 3-axis joystick
- Internal 9V battery available
- 2 line dot matrix LCD display
- Low power operation
- Front power button
- USB mouse functionality(works as mouse)

## Dimensions

mm



## System Configuration





# Power Adapters


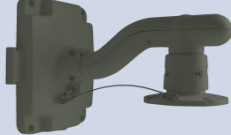


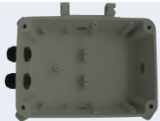

MODEL	DESCRIPTION	MAGE
PA-1	-Power Adapter , 24VAC, 2.5A -Input : 100VAC, 50/60Hz 960mA -Output : 24VAC 2.5A or -Input : 230VAC, 50/60Hz 450mA -Output : 24VAC 2.5A	
	<b>Applicable models</b>	
	iCanView240/250/312/340(MP), 350(MP), myDome240/250	
PA-2	-Power adapter, 12VDC, 5A -Input : 100-240VAC 50/60Hz -Output : 12VDC 5A	
	<b>Applicable models</b>	
	iCanServer540/540R/540RH	
PA-3	-Power adapter, 12VDC, 3.35A -Input : 100-240VAC 50/60Hz 0.4A -Output : 12VDC 3.35A	
	<b>Applicable models</b>	
	iCanView260/270/370x/382x myDome270/270H	
PA-4	-Power adapter 12VDC, 1.5A -Input: 100-240VAC, 50/60Hz -Output: 12VDC 1.5A	
	<b>Applicable models</b>	
	iCanView222/232/322(MP)/332(MP), 262/362(MP), iCanServer512/612	

# Brackets & Housings

MODEL (Applicable models)	DESCRIPTION	IMAGE
<b>mD-100</b> (iCanView222/322(MP))	Embedded mount bracket	
<b>mD-101M</b> (iCanView260/270/370, myDome/270)	Embedded mount bracket	
<b>mD-101</b> (iCanView250/350(MP), myDome250)	Indoor Embedded mount bracket for flush type	
<b>mD-103</b> (iCanView240/340(MP), myDome240)	Outdoor Housing with Fan&Heater and mD-104	
<b>mD-104</b> (iCanView260/270/370, myDome260/270)	Wall mount bracket, IP66	

MODEL (Applicable models)	DESCRIPTION	IMAGE
<b>mD-107</b>	Corner mount adaptor only for mD-103/104	
<b>mD-109</b>	Pole mount adaptor only for mD-103/104	
<b>mD-M300F</b> (iCanView262, 362(MP))	Embedded ceiling mounts bracket	
<b>mD-302TCAM</b> (iCanView262, 362(MP))	Wall mount bracket	
<b>mD-301TCAM</b> (iCanView262, 362(MP))	Ceiling mount bracket	

MODEL (Applicable models)	DESCRIPTION	IMAGE
<b>mD-301</b> (iCanView250/350(MP), myDome250)	Ceiling bracket kits for indoor speed dome with mD-303	
<b>mD-302</b> (iCanView250/350(MP), myDome250)	Wall bracket kits for Indoor Speed dome with mD-303	
<b>mD-303</b>	Indoor Ceiling Cap Only for mD-301/302	
<b>mD-304</b> (iCanView240/340(MP)/260/270/370, myDome240)	Ceiling Bracket kits for outdoor speed dome with mD-306	
<b>mD-305</b> (iCanView240/340(MP)/260/270/370, myDome240)	Wall Bracket kits for outdoor speed dome with mD-306	
<b>mD-306</b>	Ceiling Cap for Outdoor Speed dome Only for mD-304/305	
<b>mD-307</b>	Junction box kits including PCB and Cable Only for mD-301/302/304/305	
<b>mD-308</b>	Junction box only without PCB and Cable Only for mD-301/302/304/305	
<b>mD-309</b>	Pole mount adaptor Only for mD-301/302/304/305	
<b>mD-310</b>	Corner mount adaptor Only for mD-301/302/304/305	

MODEL (Applicable models)	DESCRIPTION	IMAGE
<b>mD-304R</b> (iCanView312)	Ceiling Bracket kits for outdoor speed dome with mD-306R	
<b>mD-305R</b> (iCanView312)	Wall Bracket kits for outdoor speed dome with mD-306R	
<b>mD-306R</b> (iCanView312)	Ceiling Cap for Outdoor Speed dome Only for mD-304R/305R	
<b>mD-307R</b>	Junction box kits including PCB and Cable Only for mD-30xR	
<b>mD-308R</b>	Junction box only without PCB and Cable Only for mD-30xR	
<b>mD-309R</b>	Pole mount adaptor Only for mD-30xR	
<b>mD-310R</b>	Corner mount adaptor Only for mD-30xR	